

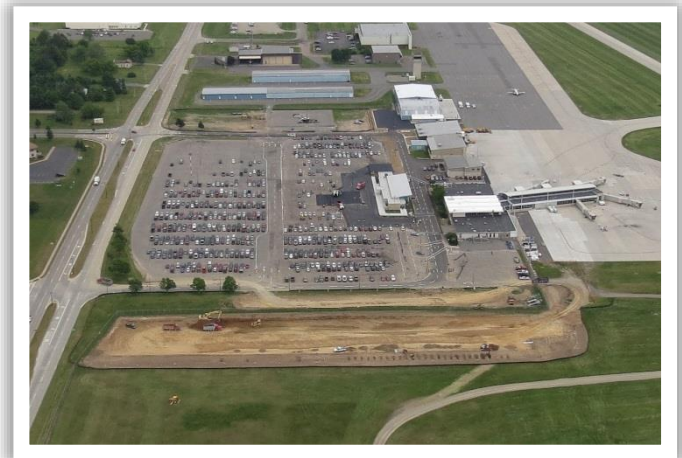
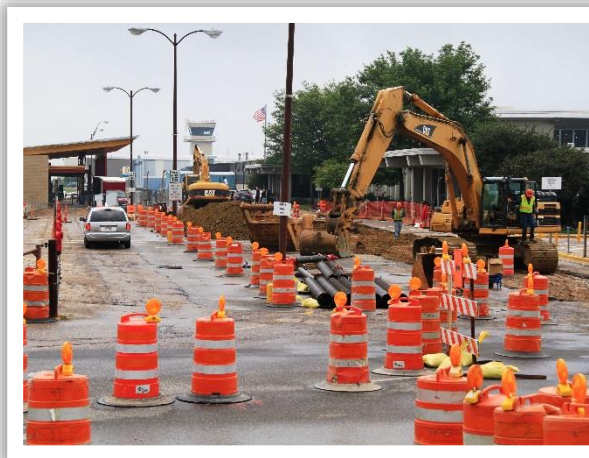


Projects

Becher Hoppe has provided services to Central Wisconsin Airport (CWA) since 1969. Projects include:

- 1969 Initial planning and design Airport Layout Plan, 6700-foot Runway 8/26, taxiway and apron, terminal building, maintenance building, FBO building, ARFF building
- 1973 5700-foot Runway 17/35, 950-foot runway extension to Runway 8/26, parallel taxiway to Runway 8/26, REILS and VASI on Runway 8/26
- 1976 Apron expansion, constructed Taxiway B and terminal area fencing
- 1979 Partial parallel taxiway construction, electrical vault building, lighting and marking, subsurface drains, aircraft hangar
- 1981 Freight storage building, sand storage building, addition to ARFF building
- 1984 Parallel taxiway to Runway 17/35
- 1986 Entrance road, parking lot expansion and taxiway guidance signs, terminal apron expansion
- 1987 Remodeling of terminal building, including reconstruction of entrance ways and entrance road; addition to freight building to house airport administration offices
- 1990 Above-ground fuel storage and dispenser system, airport perimeter fence
- 1991 Addition to FBO hangar, air traffic control tower
- 1993 Flyash embankment and runway safety area extension

(continued)



Projects *(continued)*

- | | |
|-------------|---|
| 1997 | Terminal apron expansion for concourse addition, environmental assessment for Runway 35 approach lights and extension |
| 1998 | MALSR, high-intensity runway lights and 800-foot extension on Runway 35, wetland mitigation site, terminal concourse addition site work and boarding bridges |
| 1999 | Runway 17/35 ILS system |
| 2001 | General aviation apron reconstruction |
| 2004 | Runway 8/26 and taxiways pavement reconstruction |
| 2006 | Terminal area master plan |
| 2010 – 2011 | Apron design and construction, underground utilities |
| 2010 – 2015 | Environmental Assessment and initial planning, design, and approval of CWA's six-year multi-phased campus infrastructure and parking improvements for terminal expansion |
| 2011 | Stand-alone rental car facility, infrastructure improvement upgrades (sanitary, water, gas, communications, electrical service, and stormwater) for future terminal expansion |
| 2012 | East and west parking lot construction |
| 2012 – 2014 | Phased terminal additions site improvements |
| 2015 | Center parking lot reconstruction |